



**Audio Midi & Recordings  
are Available to Purchase**

**Music & Lyrics, Sheet Music  
Photography, Recordings & Graphics  
by Alison Jane How {Bachelor of Music Education}  
©AJ How**

**CVP avm  
Chords Lyrics Vocal Melody  
Instrumental Leads Piano  
Vocal Melody not focal in Accompaniment  
Key : E Major ~ Original Key**

This sheet music is available as a retail item only.  
No copying without permission/payment per item.  
One pdf file/print per fee for each recipient.

Pay multiple times for the Pdf file where there is more than one recipient.  
e.g. a choir of 20 vocalists plus a Conductor/Director & Instrumentalist pays for 22.  
If the file is to be gifted, the recipient must adhere to the terms and conditions herewith.

No file sharing/renaming, unauthorized selling, re-selling, broadcasting,  
photo/screen capturing, document editing/content separation,  
further internet uploading, emailing, forwarding, in-app breaches. Thank you.

To purchase Sheet Music & Recordings.  
for all other permissions, payments including recording/release

**CONTACT**

email ~ enterprisesunltd@hotmail.com

CLVP avm  
E MAJOR  
Original Key

Vocal Melody not focal in Accompaniment

Retail Item

# A CHANCE FOR EVERYONE

Music, Lyrics & Arrangement by & © Alison Jane How {Bachelor of Music Education}

## INTRO

Solo Instrument

♩ = 122

E E6 E sus2 E E E6 E sus2 E

*mf*

Piano

*mf*

## VERSE 1

5 E E6 E sus2 E E6

*mf*

We all \_\_\_ have fan - ta - sies \_\_\_ 'bout where we'd like

P

8 E A sus2 A sus2 <sup>5</sup>B /A A sus2

\_\_\_ to be. \_\_\_ We have a spe - cial dream we hope to see \_\_\_ come \_\_\_

P

107 E A sus2 B A sus2 E

A cha - a a a - nce for ev -

110 A sus2 B A sus2 E

- - - 'ry - on A

112 A sus2 B/A A sus2 E

chance for ev - 'ry - one. A

114 E

chance for ev - 'ry - one.

# A CHANCE FOR EVERYONE

**Music & Lyrics**  
**Sheet Music, Recordings**  
**by Alison Jane How**  
{Bachelor of Music Education}  
©AJ How

**MIDI AUDIO & RECORDINGS**  
**ARE AVAILABLE TO PURCHASE**

**CLXP avm**  
**Chords Lyrics Vocal Melody**  
**Instrumental Leads Piano**  
**Vocal Melody not vocal in Accompaniment**  
**Key : E Major ~ Original Key**

This sheet music is available as a retail item only.

No copying without permission/payment per item.

One pdf file/print per fee for each recipient.

Pay multiple times for the Pdf file where there is more than one recipient.

e.g. a choir of 20 vocalists plus a Conductor/Director & Instrumentalist pays for 22.

If the file is to be gifted, the recipient must adhere to  
the terms and conditions herewith.

No file sharing/renaming, unauthorized selling, re-selling, broadcasting,  
photo/screen capturing, document editing/content separation,  
further internet uploading, emailing, forwarding, in-app breaches. Thank you.

To purchase Sheet Music & Recordings.

for all other permissions, payments including recording/release

CONTACT

email ~ enterprisesunltd@hotmail.com

# A CHANCE FOR EVERYONE

Music, Lyrics & Arrangement by & © Alison Jane How {Bachelor of Music Education}

## INTRO

### Solo Instrument

♩ = 122

E E6 E sus2 E E E6 E sus2 E

mf

Piano

mf

## VERSE 1

E E6 E sus2 E E E6

5

mf

We all have fan - sies 'bout where we'd like

P

### Main 2nd down

sus2 E A sus2 A sus2 B 5 / A A sus2

8

to be. We have a spe-cial dream we hope to see come

P

107 E A sus2 B A sus2 E

A cha - a - a - a - nce for ev -

110 A sus2 B A sus2 E

- - 'ry - - - one A

112 A sus2 B/A A sus2 E

chance for ev - 'ry - one. A

114 E

chance for ev - 'ry - one.

**A CHANCE FOR EVERYONE**

Music, Lyrics &amp; Arrangement by &amp; © Alison Jane How {Bachelor of Music Education}

**INTRO**

Solo Instrument

♩ = 122

E E6 E sus2 E E E6 E sus2 E

*mf*

Piano

*mf*

**VERSE 1**

E E6 E sus2 E E6

5

*mf*

We all \_\_\_ have fan - tasies \_\_\_ 'bout where we'd like

E sus2 E A sus2 A sus2 B<sup>5</sup>/A A sus2

8

\_\_\_ to be. \_\_\_ We have a spe-cial dream we hope to see \_\_\_ come \_\_\_

107 E A sus2 B A sus2 E

A cha - a a a - nce for ev -

110 A sus2 B A sus2 E

- - - 'ry - - - one. A

112 A sus2 B/A A sus2 E

chance for ev - 'ry - one. A

114 E

chance for ev - 'ry - one.

**A CHANCE FOR EVERYONE**

Music, Lyrics &amp; Arrangement by &amp; © Alison Jane How {Bachelor of Music Education}

**INTRO****Solo Instrument**

♩ = 122

E E6 E sus2 E E E6 E sus2 E

*mf*

Piano

*mf*

**VERSE 1**

5

E E6 E sus2 E E E6

*mf*

We all \_\_\_ have fan - sies \_\_\_ 'bout where we'd like

**Main 2nd down**

8

E sus2 E A sus2 A sus2 B<sup>5</sup>/A A sus2

\_\_\_ to be. \_\_\_ We have a spe-cial dream we hope to see \_\_\_ come \_\_\_

107 E A sus2 B A sus2 E

A cha - a a a - nce for ev -

110 A sus2 B A sus2 E

- - - 'ry - - - A

112 A sus2 B/A A sus2 E

chance for ev 'ry one. A

114 E

chance for ev - 'ry - one.

LSM

E MAJOR

Original Key

# A CHANCE FOR EVERYONE

Retail Item

Music, Lyrics & Arrangement by & © Alison Jane How {Bachelor of Music Education}

## INTRO

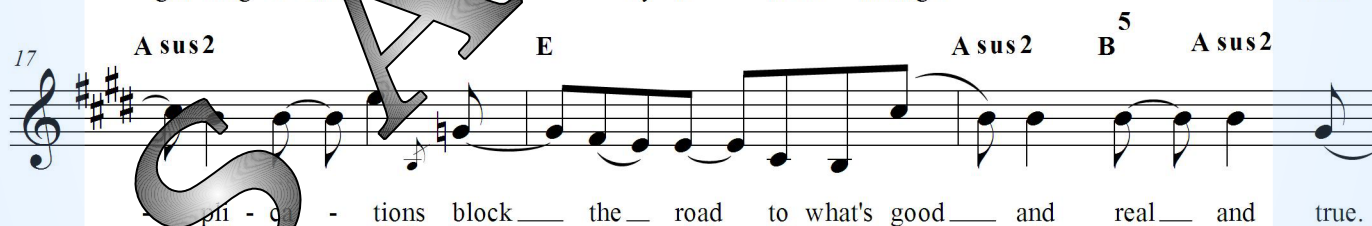
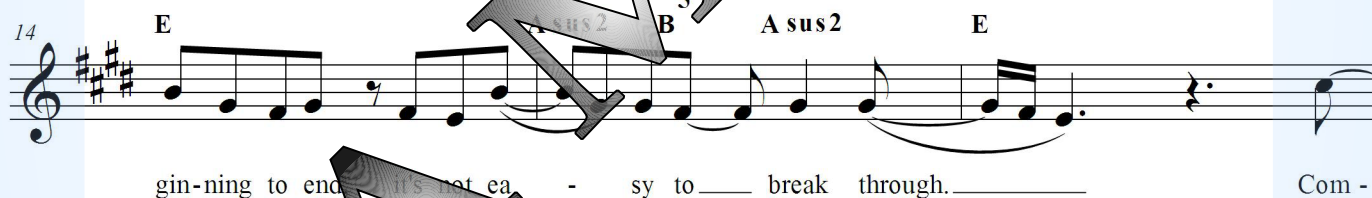
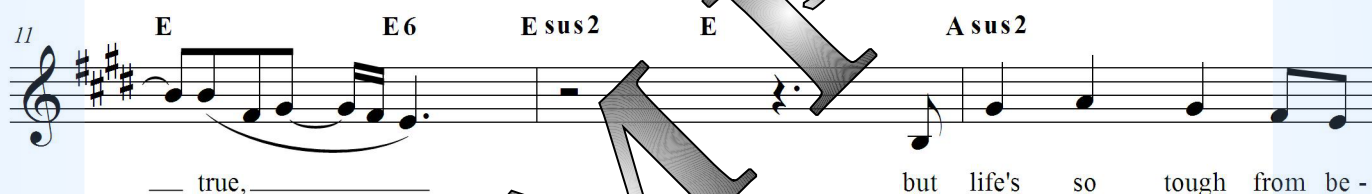
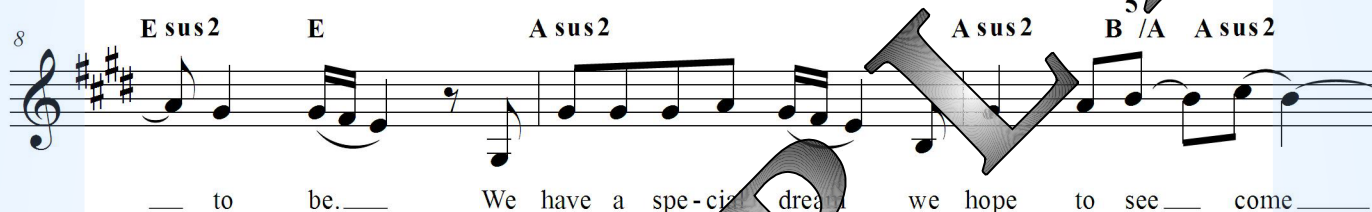
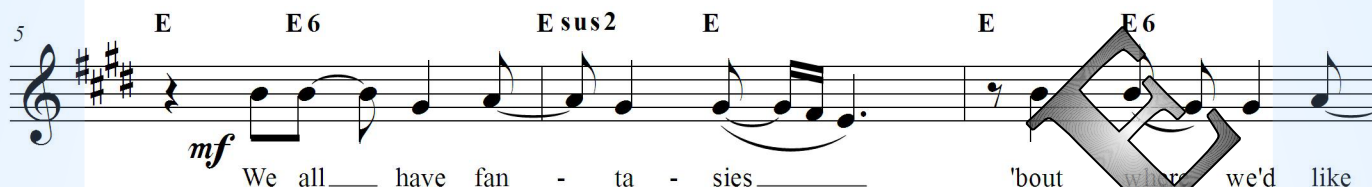
Solo Instrument

♩ = 122

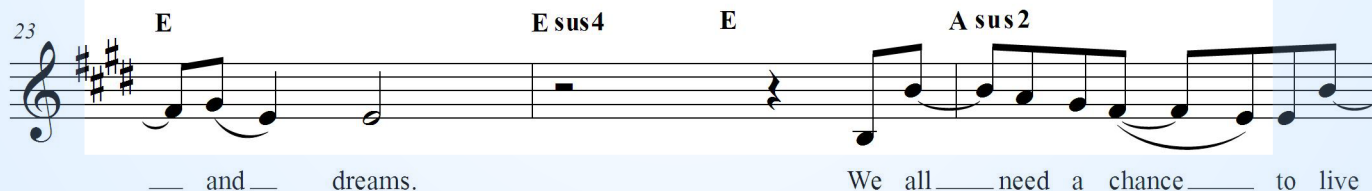
E E6 E sus2 E E E6 E sus2 E



## VERSE 1



## Pre Chorus



95 **E** **A sus2**  
— loved. — Be a go - er and a try - er to your

98 **B** **A sus2**  
pre-cious heart's de - si - re. — No mat-ter who you are or where

101 **B** **A sus2** **B** **A sus2** **E**  
— you've come from, a chance for ev - 'ry - one. — A

104 **A sus2** **B** **A sus2** **E** **A sus2** **B** **A sus2**  
chance for ev - 'ry - one. — A chance for ev - 'ry - one.

107 **E** **A sus2** **B** **A sus2** **E**  
— A cha - a — a — a - nce for ev -

110 **A sus2** **B** **A sus2** **E** **A sus2** **B/A** **A sus2**  
— 'ry - one. — A chance for ev - 'ry - one.

113 **E** **E**  
— A chance for ev - 'ry - one. —

115  
—

LSM nn

Note Names Included

Retail Item

E MAJOR

Original Key

**A CHANCE FOR EVERYONE**

Music, Lyrics &amp; Arrangement by &amp; © Alison Jane How {Bachelor of Music Education}

**INTRO Solo Instrument**

$\text{♩} = 122$  E E6 E sus2 E E E6 E sus2 E

*mf* B C# F# E B C# F# E

**VERSE 1**

5 E E6 E sus2 E E E

*mf* B B G# A G# G# F# E B B G# G# A

We all have fan - ta - sies 'bout where we'd like

8 E sus2 E A sus2 A sus2 B / A A sus2

G# G# F# E G# G# G# A G# F# E B G# A B C# B

to be. We have special dream we hope to see come

11 E E6 E sus2 E A sus2

B F# G# F# E B G# A G# F# E

true, but life's so tough from be -

14 A sus2 B<sup>5</sup> A sus2 E

B G# F# G# F# E B G# G# F# G# G# F# E C#

gin-ning to end, it's not ea - sy to break through. Com -

17 A sus2 E A sus2 B<sup>5</sup> A sus2

B B E B G F# E E C# B C# B B B B G#

- pli - ca - tions block the road to what's good and real and true.

104 A sus2 B A sus2 E A sus2 B A sus2

C# B B B C# B C# B B E A G# G# F# E E E  
 chance for ev - 'ry - one. A chance for ev - 'ry - one.

107 E A sus2 B A sus2 E

C# B E C# E C# E C# B C# B E C#  
 A cha - a a a - nce for ev -

110 A sus2 B A sus2 E

C# B C# B B E  
 - - - 'ry - one. A

112 A sus2 B/A A sus2 E

A G# G# F# E E E C# B  
 chance for ev - 'ry - one. B  
 A

114 E

A G# G# F# E E  
 chance for ev - 'ry - one.

LSMH

E MAJOR

Retail Item

Original Key

**A CHANCE FOR EVERYONE**

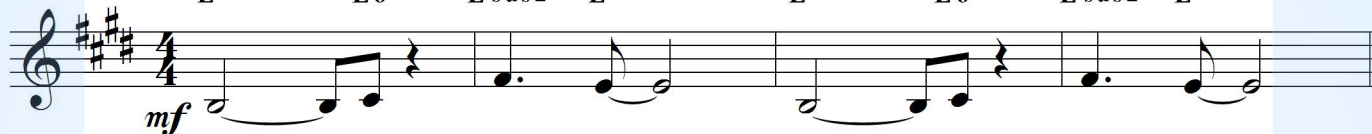
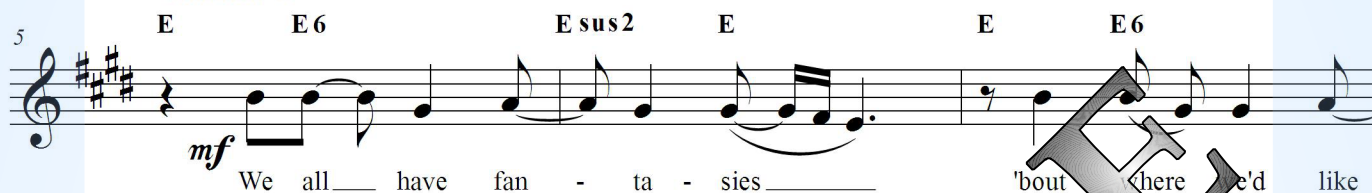
Music, Lyrics &amp; Arrangement by &amp; © Alison Jane How {Bachelor of Music Education}

**INTRO**

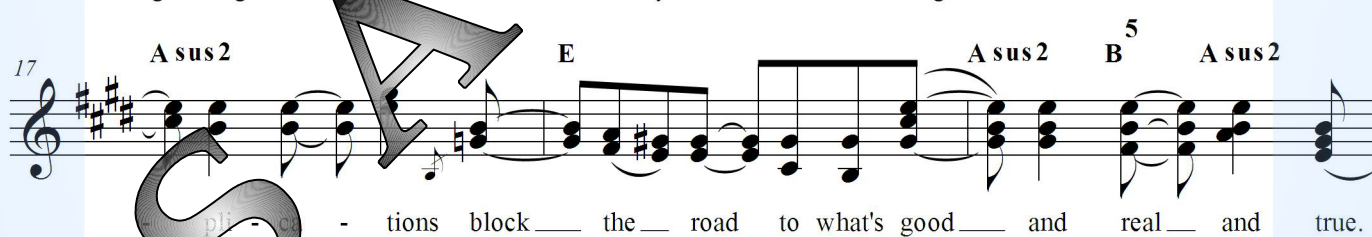
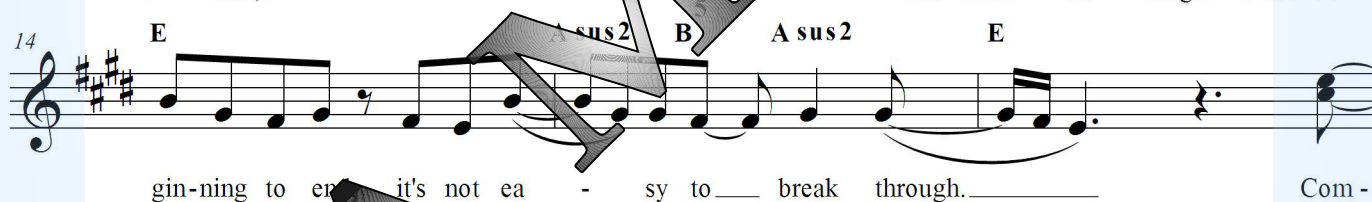
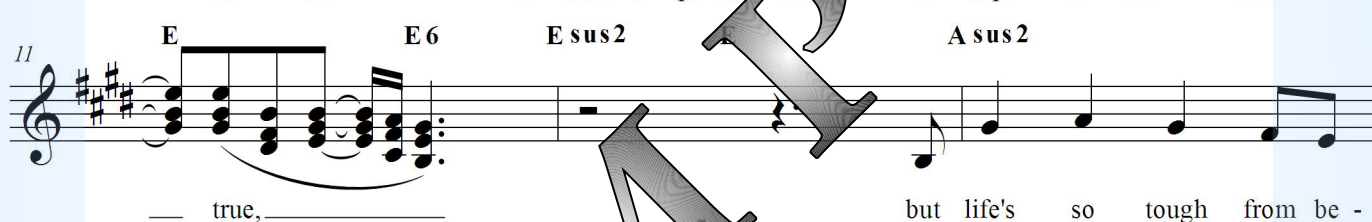
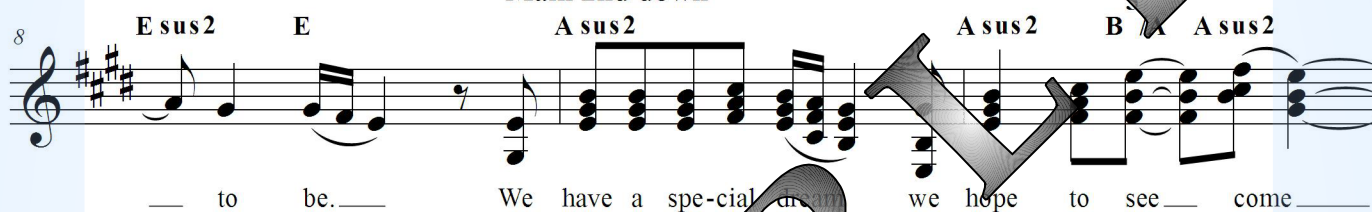
Solo Instrument

♩ = 122

E E6 E sus2 E E E6 E sus2 E

**VERSE 1**

Main 2nd down

**Pre Chorus**

95 **E** **A sus2**  
— loved. — Be a go - er and a try - er to your

98 **B** **A sus2**  
pre - cious heart's de - si - re. — No mat - ter who you are or where

101 **B** **A sus2** **B** **A sus2** **E**  
— you've come from, a chance for ev - 'ry - one. — A

104 **A sus2** **B** **A sus2** **E** **A sus2** **B** **A sus2**  
chance for ev - 'ry - one. — A chance for ev - 'ry - one.

107 **E** **A sus2** **B** **A sus2** **E**  
— A cha - a — a — a - nce for ev -

110 **A sus2** **B** **A sus2** **E**  
— 'ry - - - one. — A

112 **A sus2** **B/A** **A sus2** **E**  
chance — for ev - 'ry - one. — A

114 **E**  
chance for ev - 'ry - one. —

**LYRICS AND CHORDS page 1 of 2**  
**'A CHANCE FOR EVERYONE' by and copyright Alison Jane How{B.Mus.Ed}**  
**Lyrics and Music Retail Item**

**KEY : E MAJOR ~ ORIGINAL KEY**

**INTRO E E6 Esus2 E x2**

**VERSE 1**

**E E6**

WE ALL HAVE

**Asus2**

WE HAVE

**A**

BUT

**A**

COM

**Pre C**

**A**

WE A

**A**

WE A

**A**

**CHO**

**A**

**A**

A CH

**A**

TO B

**A**

BE A

**A**

NO M

**As**

A CH

**A**

**VER**

**A**

**E**

SOM

**Asus**

**A**

**Asus**

**A**

SO

**A**

WHI

**Pre Ch**

**Asus**

WE ALL NE

**Asus2**

WE ALL NEED A CHANCE TO LIVE OUR HOPES AND DREAMS.

SAMPLE

ALL IN VIEW PURCHASED FILE

continued on page 2 ....

**LYRICS AND CHORDS page 2 of 2**  
**'A CHANCE FOR EVERYONE' by and copyright Alison Jane How{B.Mus.Ed}**  
**Lyrics and Music Retail Item**

**KEY : E MAJOR ~ ORIGINAL KEY**

**continued...**

**CHORUS**

**Asus2 B Asus2 E Asus2 E**  
A CHANCE FOR EVERYONE TO SHARE THEMSELVES IN LIFE

**As**  
TO BE IN

**As**  
BE A

**A**  
NO M

**As**  
A CH

**As**  
A CH

TO B

BE A

**A**  
NO M

**As**  
A CH

**As**  
A CH

**As**  
A CH

**As**  
A CH

**SAMPLE**

**ALL IN VIEW PURCHASED FILE**

**KEY : E MAJOR ~ ORIGINAL KEY**

**INTRO**

**VERSE 1**

WE ALL HAVE FANTASIES, 'BOUT WHERE WE'D LIKE TO BE.  
WE HAVE A SPECIAL DREAM WE HOPE TO SEE COME TRUE,  
BUT LIFE'S SO TOUGH FROM BEGINNING TO END, IT'S NOT EASY TO BREAK THROUGH.  
COMPLICATIONS BLOCK THE ROAD TO WHAT'S GOOD AND REAL AND TRUE.  
[ WE ALL MEET

**CH**

**A**

SAMPLE

ALL IN VIEW PURCHASED FILE

**LYRICS CHART page 1 of 1**  
**'A CHANCE FOR EVERYONE' by and copyright Alison Jane How {B.Mus.Ed}**  
**Lyrics and Music    Retail Item**

**KEY : E MAJOR ~ ORIGINAL KEY**

**INTRO**

**VERSE 1**

We all have fantasies, 'bout where we'd like to be.  
We have a special dream we hope to see come true,  
but life's so tough from beginning to end, it's not easy to break through.  
Complications block the road to what's good and real and true.  
[ We all n

C'

SAMPLE

ALL IN VIEW PURCHASED FILE